

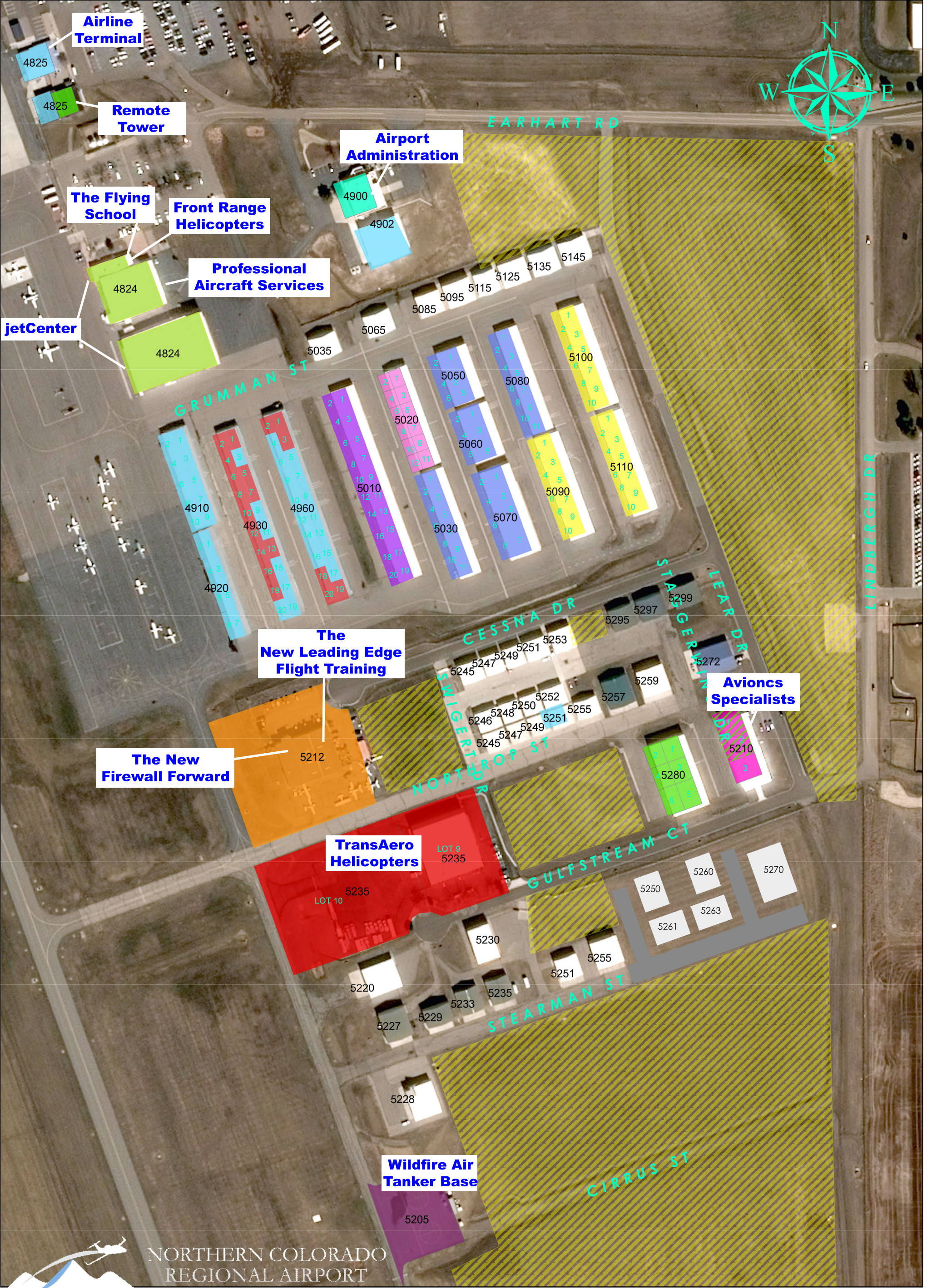


Legend

-  Airport Influence Area
-  Critical Zones
-  Avigations Easements



NOTE: Identifying undeveloped land was based on Larimer County Assessor's data and COL 2013 Aerial building footprints. Some identified lots may be redeveloped in the future.



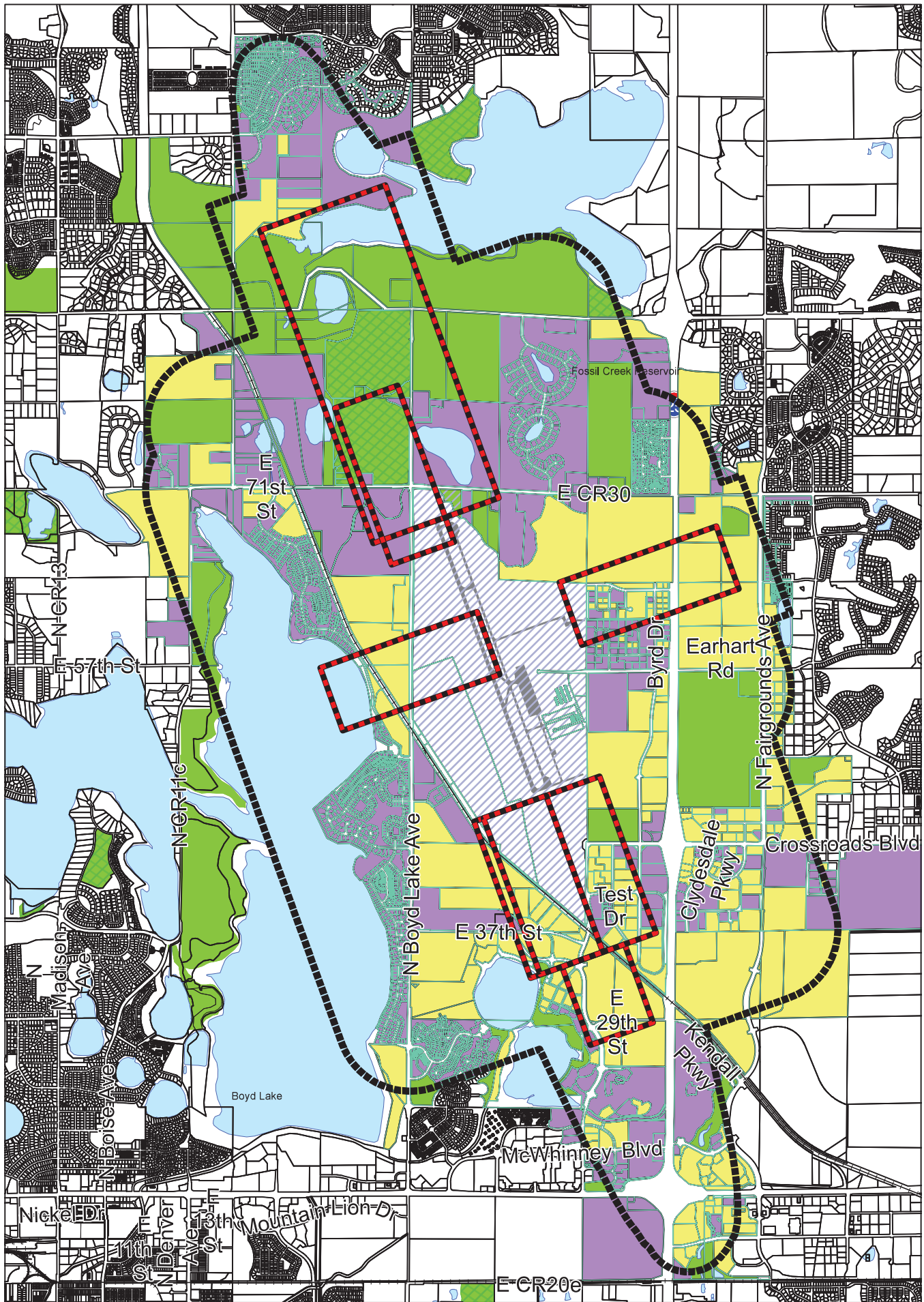
Legend				
<div></div> Airport Owned	<div></div> Avionics Specialists	<div></div> New Firewall Forward & New Leading Edge	<div></div> FNL CONDO ASSOCIATION	<div></div> GULFSTREAM HANGAR ASSC 4
<div></div> Airline Terminal	<div></div> jetCenter, Professional Aircraft Services, Flying School, & Front Range Helicopters	<div></div> Wildfire Air Tanker Base	<div></div> FNL HANGARS ASSC	<div></div> GULFSTREAM HANGARS ASSC 3
<div></div> Airport Administration		<div></div> TransAero Helicopters	<div></div> FORT-LOVE HANGARS ASSC	<div></div> MPS PROPERTIES LLC
<div></div> Remote Tower		<div></div> FALCON T-HANGARS ASSOCIATION		<div></div> Undeveloped Area











Legend





Legend

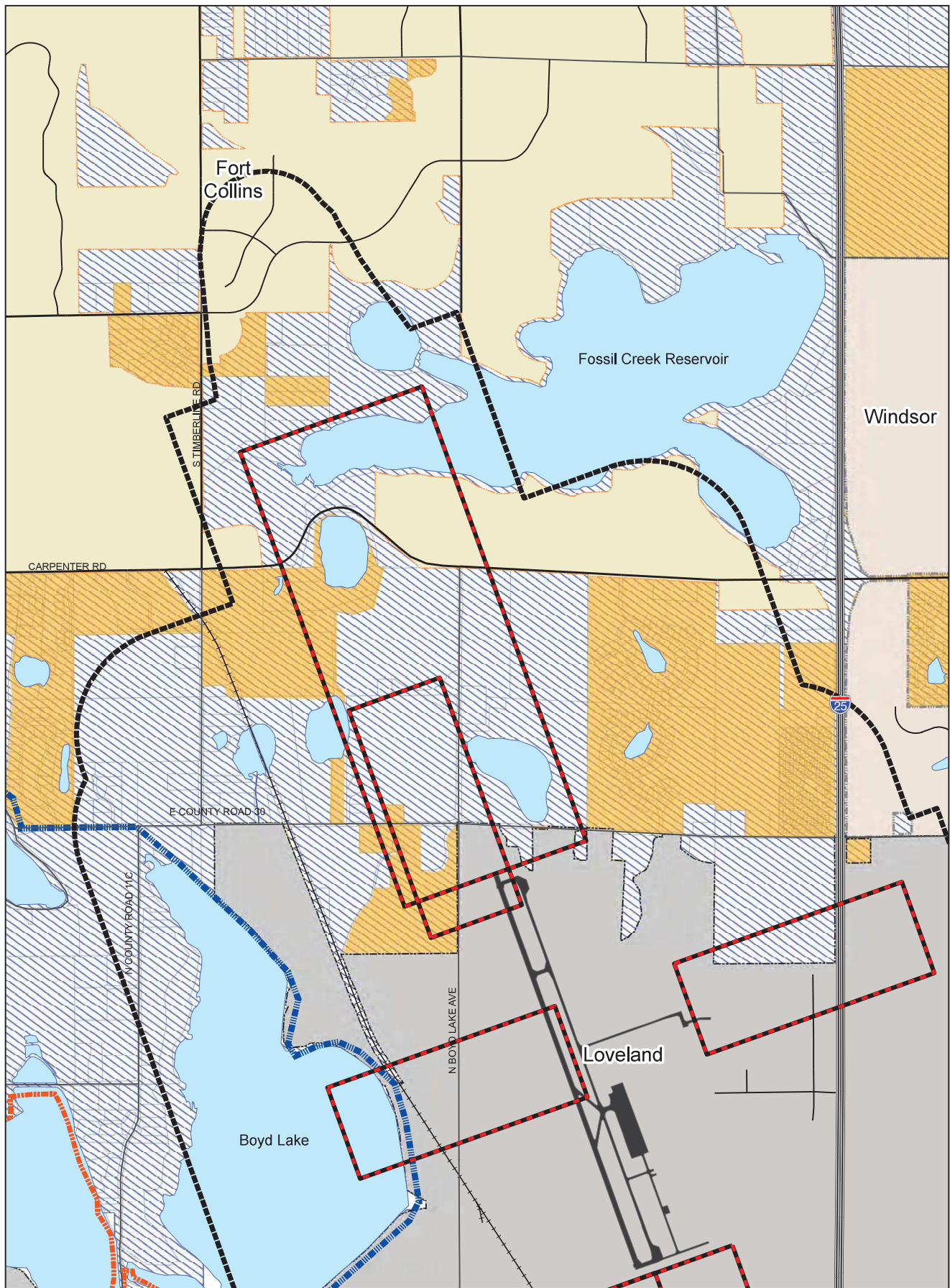
- | | | | |
|---|------------------------|---|----------------------------|
|  | Airport Influence Area |  | Undeveloped Lots in AIA |
|  | Critical Zones |  | Open Space or Agency Owned |
|  | Airport Property |  | Developed Lots in AIA |

NOTE:
Identifying undeveloped land was based on Larimer County Assessor's data and
COL 2013 Aerial building footprints. Some identified lots may be redeveloped in the future.







Date: 9/13/2016

Document Path: J:\PDC\ECTS\Report\Airport Land Use by Owner Services\apdl\bausa2016



Legend

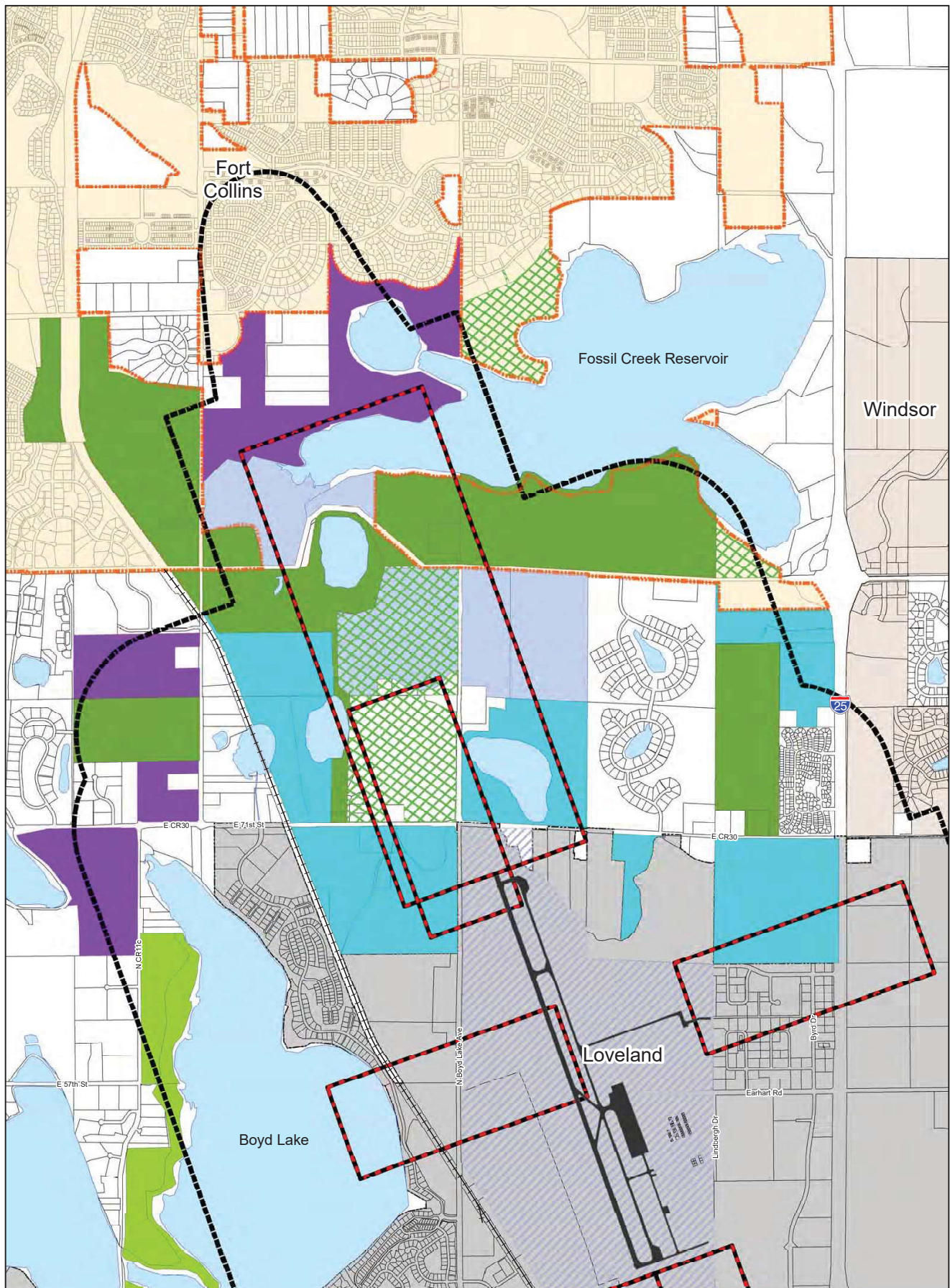
- | | | | |
|---|--|---|----------------|
|  | Fort Collins/Loveland Water District Service Area |  | Critical Zones |
|  | Currently served by South Fort Collins Sanitation District |  | Loveland |
|  | City of Loveland Water Service Area |  | Fort Collins |
|  | City of Loveland Sewer Service Area |  | Windsor |

NOTE:
These are general service area boundaries for all the providers included in this map. The City of Loveland has plans to provide utilities within the Loveland GMA (south of CR 30) as its developed and annexed. North of CR 30 is served by Fort Collins/Loveland Water District and South Fort Collins Sanitation District.



Date: 6/2/2016

0.5 0.25 0 0.5 Miles



Legend

- Undeveloped Land in AP-Airport LC Zoning District
- Undeveloped Land in FA-Farming LC Zoning District
- City And County Protected Land
- Conservation Easement
- Boyd Lake State Park
- Other Quasi Public Land
- Critical Zones
- Airport Influence Area
- Airport Property
- Fort Collins
- Loveland City Limits
- Windsor

NOTE:
Identifying undeveloped land was based on property size and it's existing use interpreted from Larimer County Assessor's data. Some lots identified have the potential to be redeveloped in the future.



0.5 0.25 0 0.5 Miles



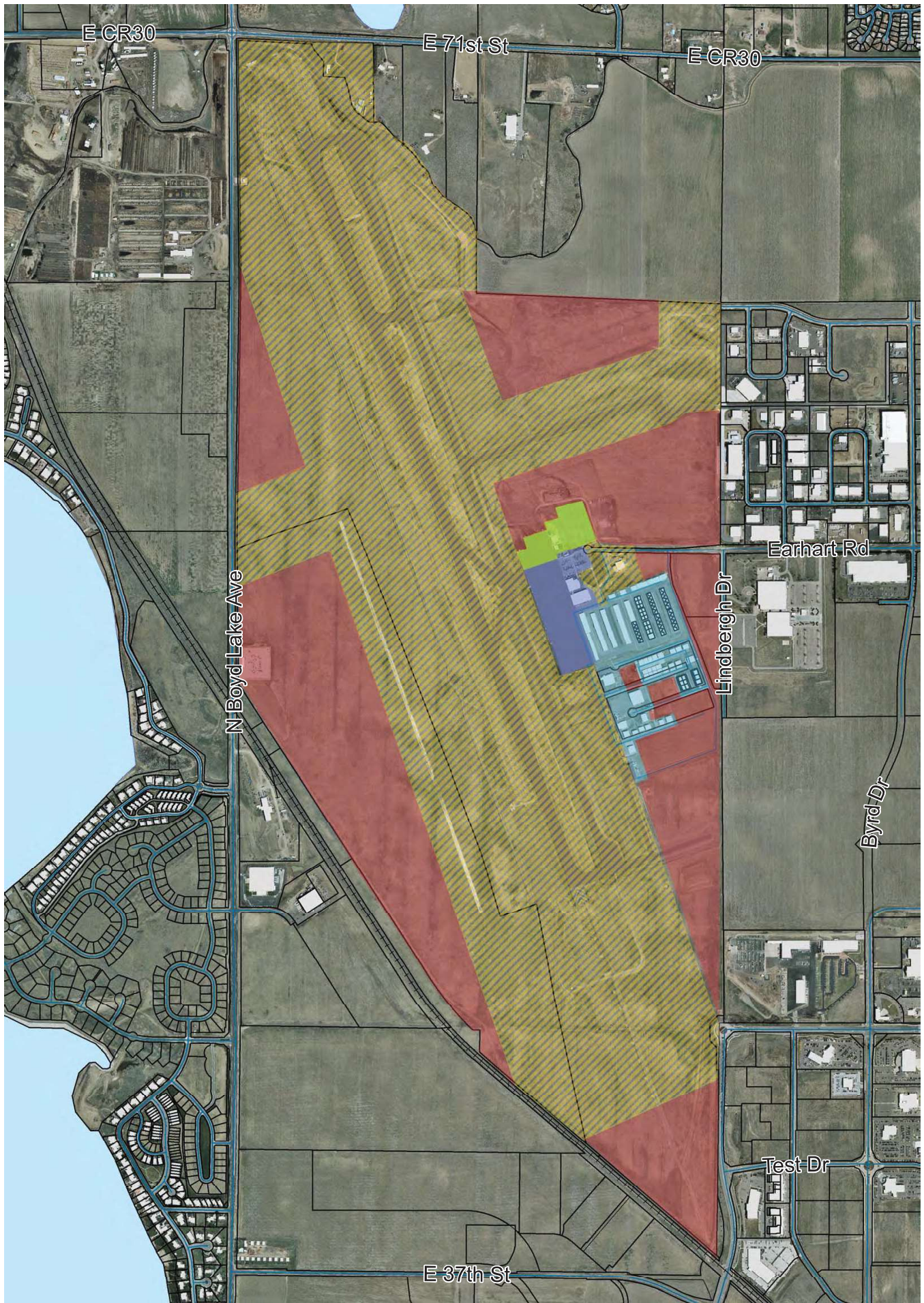
Legend

- | | | |
|--|--|---|
| Airport Owned Property | FNL Hangars Assoc | Gulfstream Hangars 3 |
| Falcon T-Hangars Assoc | Fort-Love Hangars Assoc | MPS Properties |
| FNL Condo Assoc | Gulfstream Hangars 4 | Available Improved Lots |
| | | Lease Deposits Rec'd |








Legend

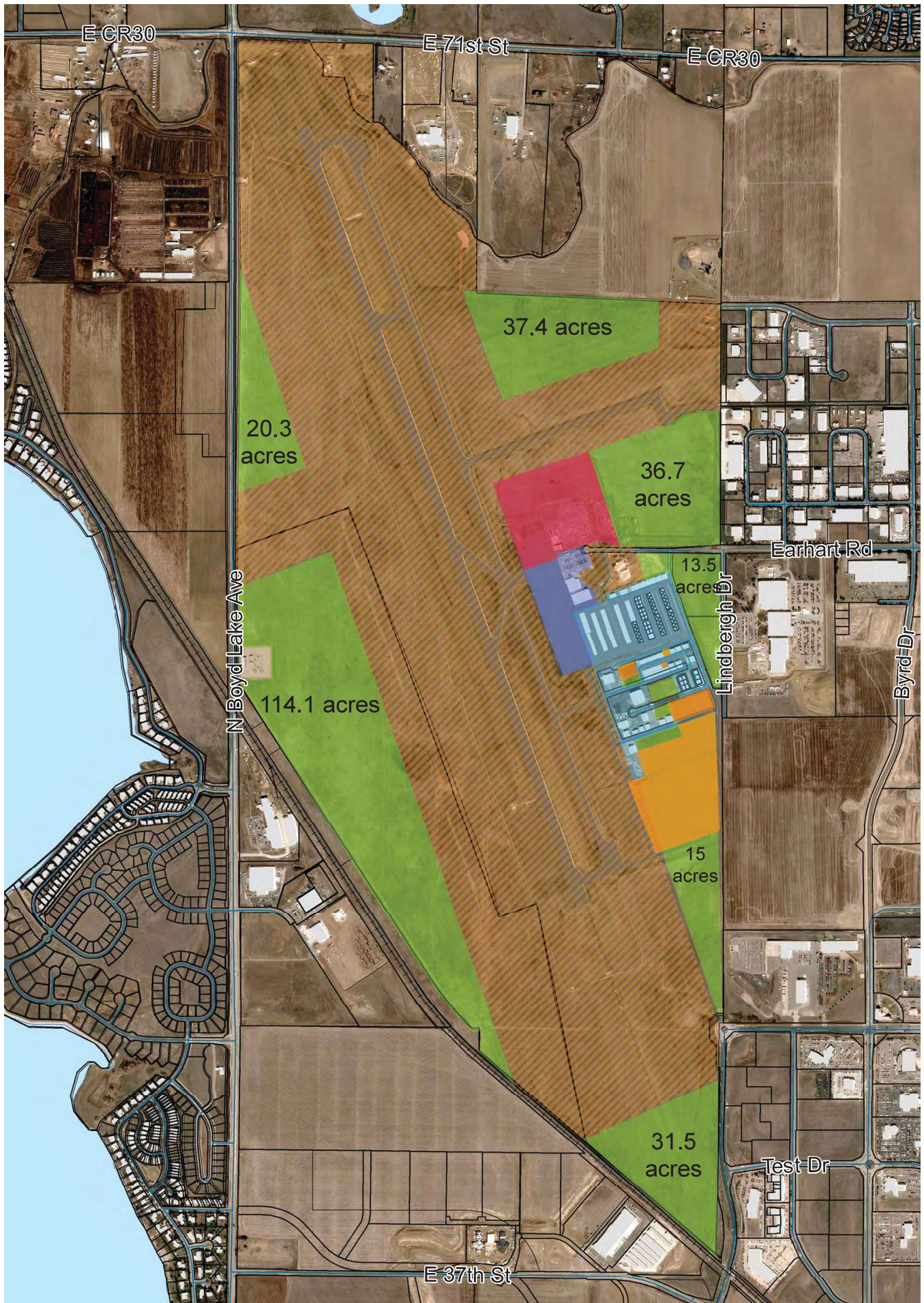
 Airport Owned Property





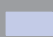



Airport Property Classifications

	Aircraft Movement Reserve	663.3 acres		Hangar Area	33.1 acres		Airline Terminal Area	6.7 acres
	Undeveloped Area	316.5 acres		FBO Area	14.3 acres			





Airport Property Classifications

 Aircraft Movement Reserve 661.5 acres	 Hangar Area 33.1 acres	 FBO Area 14.3 acres
 Undeveloped Area 293.5 acres	 Airline Terminal Area 23.9 acres	 Intend to Lease rec'd 15 acres